



INSTRUCTION BULLETIN

No. 9008912
Machine: T16
Published: 03-2011
Rev. 00

NOTE: DO NOT DISCARD the Parts List from the Instruction Bulletin. Place the Parts List in the appropriate place in the machine manual for future reference. Retaining the Parts List will make it easier to reorder individual parts and will save the cost of ordering an entire kit.

NOTE: Numbers in parenthesis () are reference numbers for parts listed in Bill of Materials.

Installation instructions for **kit number 9008913**

SYNOPSIS:

This kit contains the parts needed to install the scrub head rework kit onto T16 scrubbers.
Please follow step-by-step instructions.

SPECIAL TOOLS / CONSIDERATIONS: NONE

(Estimated time to complete: 2 hours)



PROTECT THE ENVIRONMENT

Please dispose of packaging materials, old machine components, and hazardous fluids in an environmentally safe manner according to local waste disposal regulations.

Always remember to recycle.

PREPARATION:

1. Park the machine on a clean level surface, turn off the machine, and remove the key.

FOR SAFETY: Before leaving or servicing machine, stop on level surface, turn off machine, and remove key.

2. Remove both idler covers from the scrub head. Set the idler covers aside.
3. Remove the brushes from the scrub head. Set the brushes aside.
4. Remove the debris tray from the back of the scrub head.
5. Observe the scrub head lift arms. The arms should be loose and it should be easy to remove hardware holding the arms to the scrub head.

INSTALLATION:

NOTE: Refer to Fig. 12 and Fig. 13 for parts drawings.

1. Remove both brush drive plugs from the scrub head. Be sure the key remains in place on the drive shaft when removing the brush drive plugs from the scrub head. Set the hardware aside. Discard the brush drive plugs. Refer to Fig. 1 and Fig. 2.

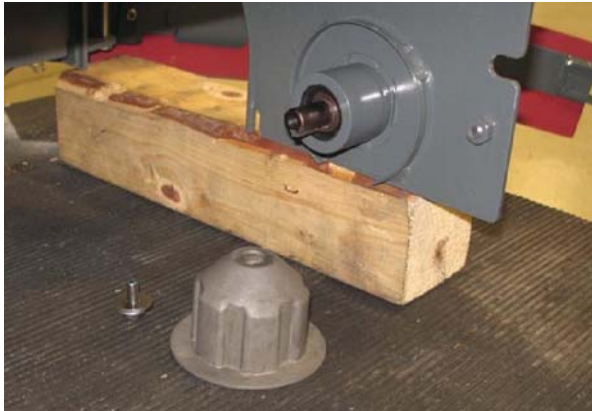


FIG. 1

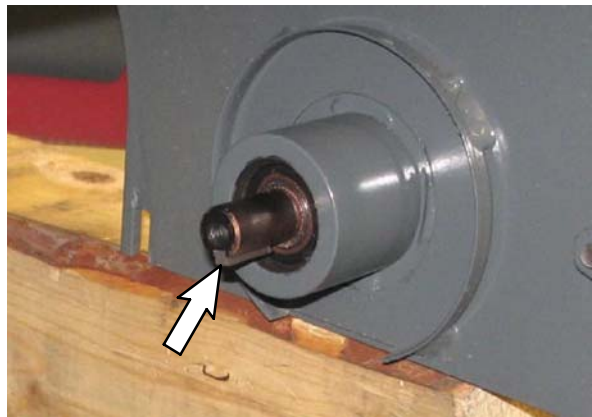


FIG. 2

2. Install the both new brush drive plugs (6) onto the scrub head. Refer to Fig. 3.

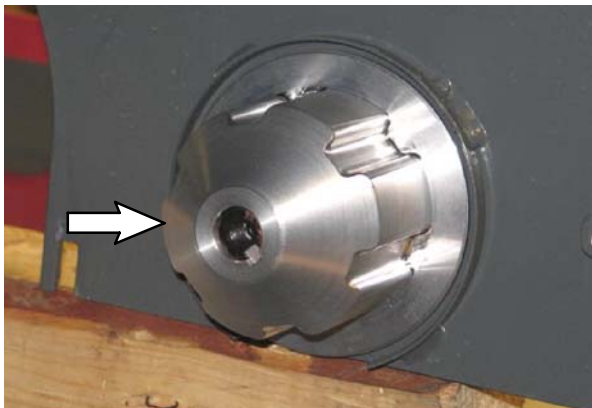


FIG. 3

3. Remove both retainer rings holding the brush idler plugs onto the idler covers. Refer to Fig. 4 and Fig. 6.



FIG. 4



FIG. 5

4. Remove the brush idler plugs from both idler covers. Refer to Fig. 5.
5. Use the retainer rings to secure the new brush idler plugs (7) onto the idler covers. Refer to Fig. 6.



FIG. 6

6. Turn on the machine, completely lower the scrub head, and turn off the machine.

- Remove the cotter pins and clevis pins holding both scrub head lift arms to the scrub head. Set the cotter pins and clevis pins removed in this step aside. Refer to Fig. 7.



FIG. 7

- Remove both scrub head lift arms from the frame of the machine. Set the scrub head lift arms aside. Discard the cotter pins and clevis pins removed in this step. Refer to Fig. 8.

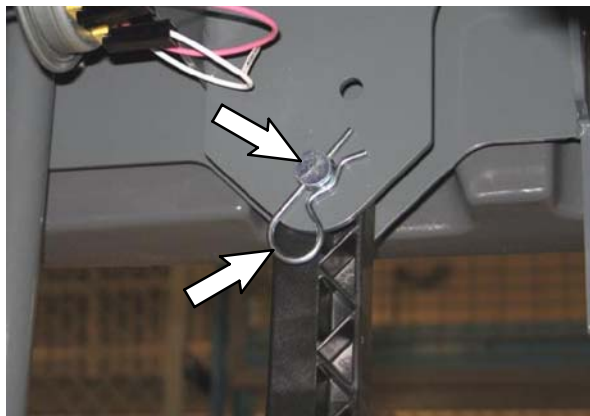


FIG. 8

- Insert the sleeve (2) into the lift arm bracket on the frame of the machine, through the scrub head lift arm, through the spacer (1), and through the the other side of the lift arm bracket. Refer to Fig. 9.

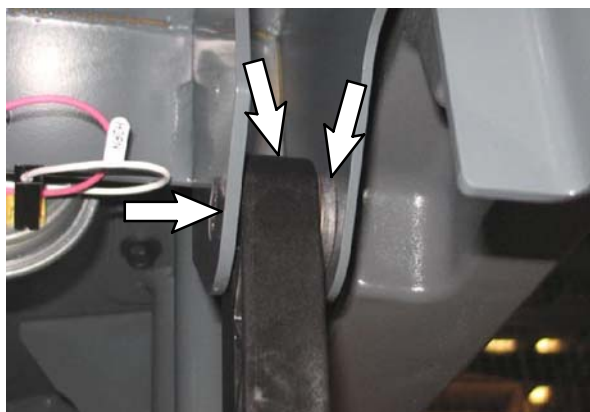


FIG. 9

- Use an M10 hex screw (3), two flat washers (4), and an M10 hex nut (5) to secure the sleeve (2), the scrub head lift arm, and spacer (1) into the lift arm bracket on the frame of the machine. Refer to Fig. 10.

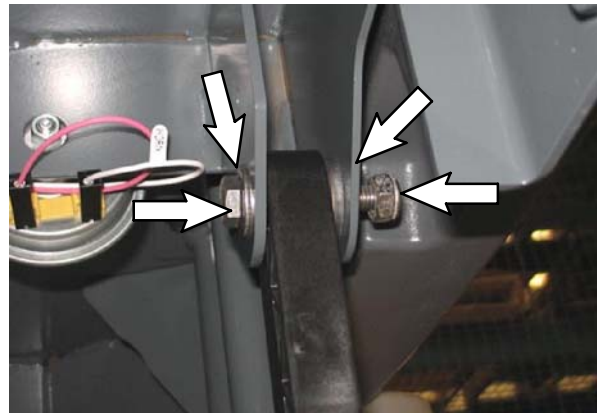


FIG. 10

- Repeat the last several steps to reinstall the other scrub head lift arm onto the other side of the machine. Refer to Fig. 9 and Fig. 10.

- Reconnect the scrub head lift arms to the machine. Install a spacer (1) when reconnecting each scrub head lift arm to the scrub head. Refer to Fig. 11.

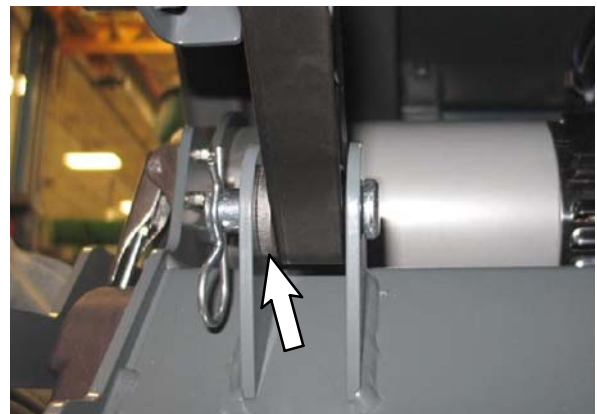


FIG. 11

- Turn on the machine, lift the scrub head to the raised position, and turn off the machine.
- Reinstall the brushes into the scrub head.
- Reinstall the idler plates onto the scrub head.
- Reinstall the debris tray onto the back end of the scrub head.
- Start and test the machine.

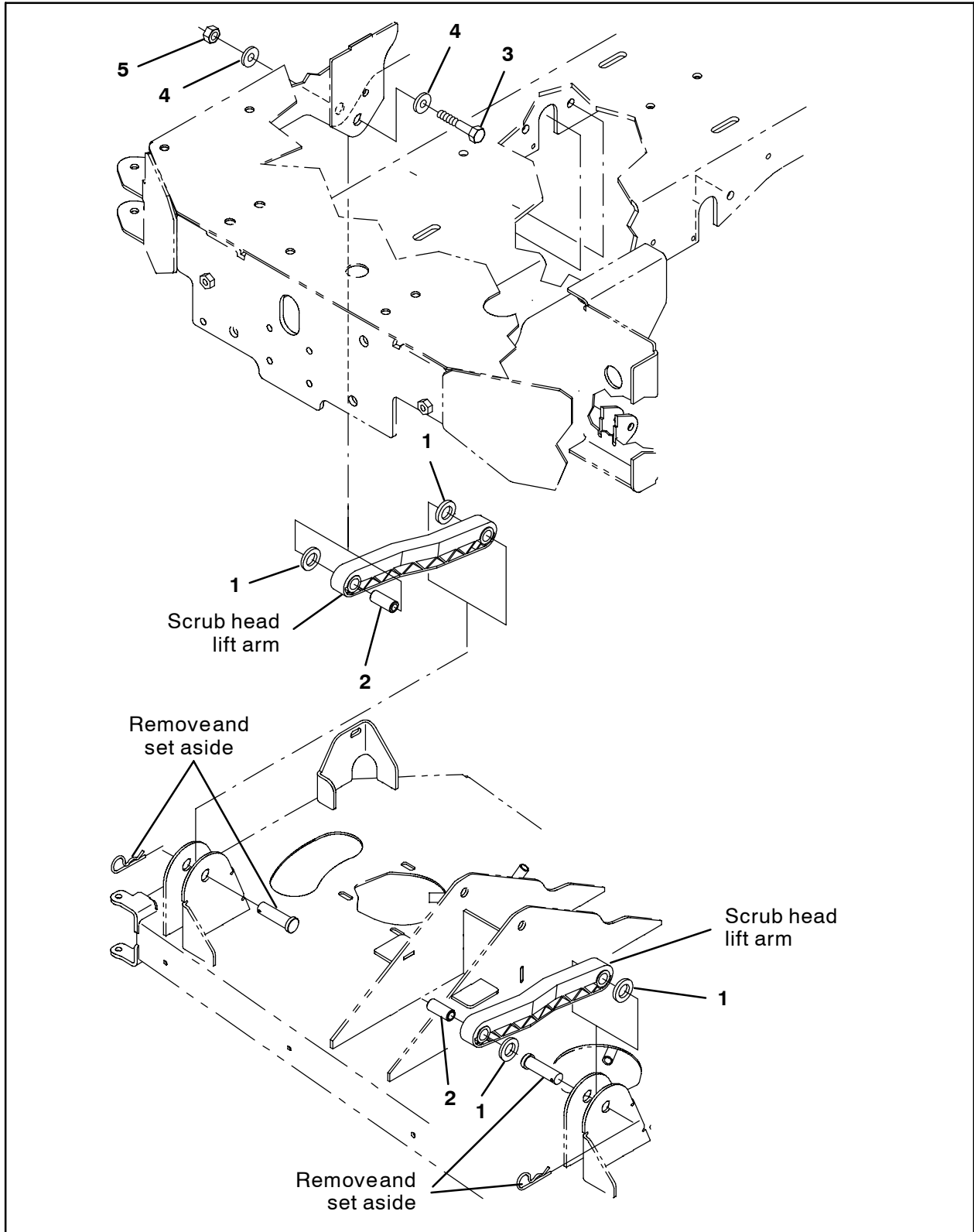


FIG. 12

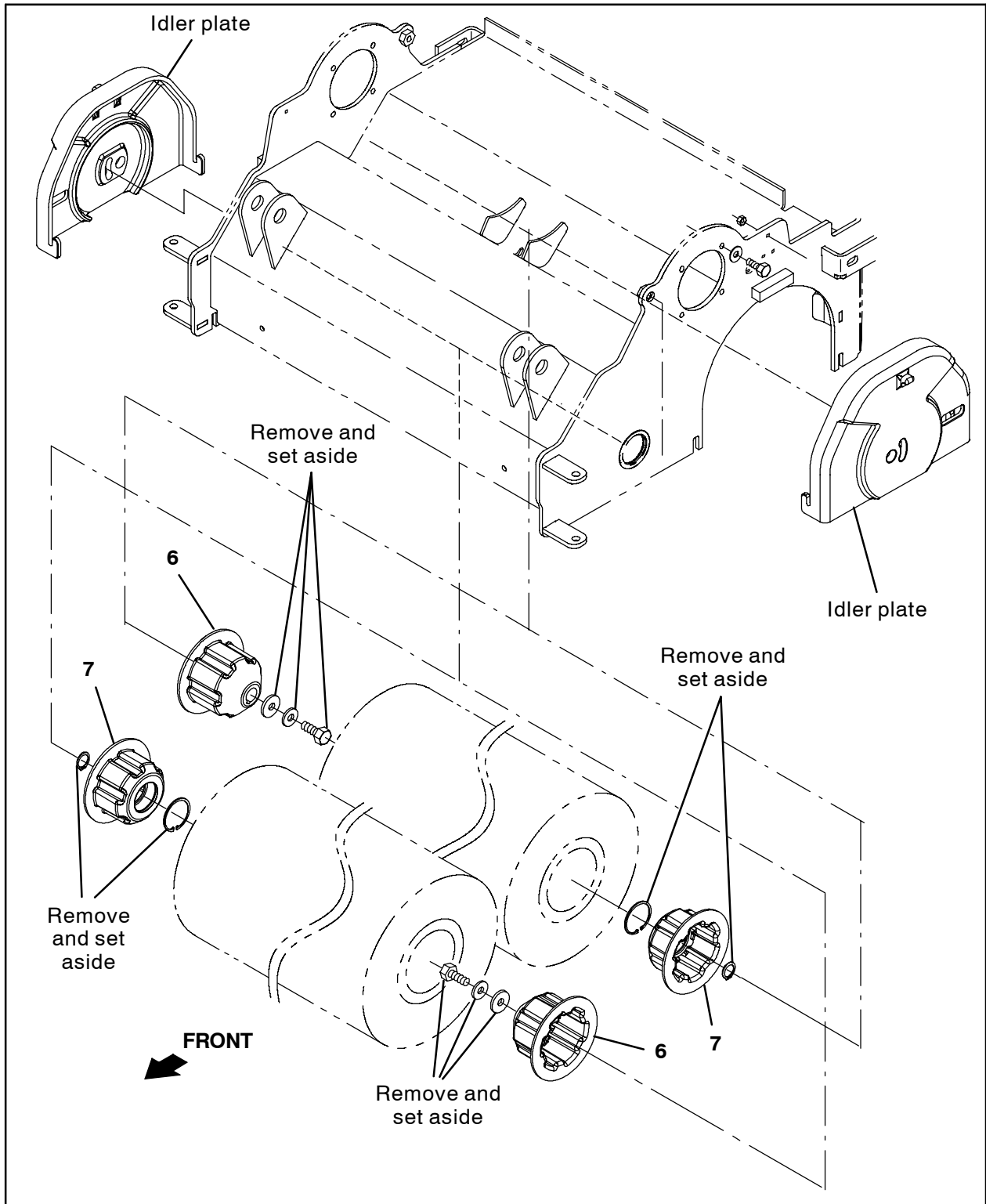


FIG. 13

Bill Of Materials For Scrubhead Kit, Rplmt [T16] - 9008913

	Ref.	Tennant Part No.	Description	Qty.
▽		9008913	Scrubhead Kit, Rplmt [T16]	1
▲	1	1067818	Spacer, Rnd	4
▲	2	1067817	Sleeve, 0.40B 0.62D 1.5L, Cham	2
▲	3	04417	Screw, Hex, M10 X 1.50 X 60, SS	2
▲	4	01686	Washer, Flat, 0.44B 1.00D .08, SS	4
▲	5	08714	Nut, Hex, Lock, M10 X 1.5, NL, SS	2
▲	6	1056155	Plug, Drive, Brush	2
▲	7	1057124	Plug, Idler, Brush	2

TENNANT COMPANY
P. O. Box 1452
Minneapolis, MN 55440-1452